

# CAN-AM

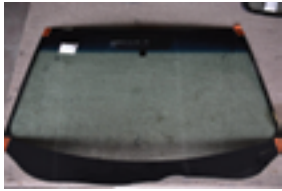
## AUTO GLASS & SUPPLIES

### WINDSHIELD OPTIONS CHECKLIST

This is a list of questions that we will ask to ensure we provide you with the right glass for your replacements.

1.

Does your vehicle have a shaded band across the top of the windshield? This is a darker tint that is usually 4 to 6 inches in width.



2.

Does your windshield have a third visor? This is a dot pattern in between your two sun visors and around your rear-view mirror.



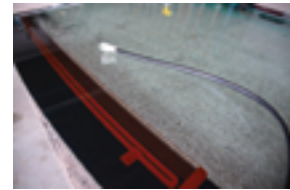
3.

Does your vehicle have an electrochromic mirror? This is a feature that will automatically dim your mirror to reduce glare while driving at night. If your vehicle has it, you'll see a power supply to the mirror and it will have an eye-type window in the mirror housing that will sense light.



4.

Does your vehicle have a heated wiper park area? This can be seen on some windshields which will have what looks like a grid of 3 to 4 lines in the glass to warm the area where the wiper blades rest.



5.

Does your vehicle have a rain sensor? You can tell if a vehicle has a rain sensor if there is a small window located near the rear-view mirror that can be seen from the outside looking in. There is usually a plastic housing covering the sensor on the inside of the vehicle and can be found around the neck of the rear-view mirror itself.



6.

Does your vehicle have lane departure? There should be a small window, usually triangular in shape, that you can see from the outside of the vehicle. It is located close to where your rear-view mirror is and you should be able to see a small camera-type lens through the glass.

